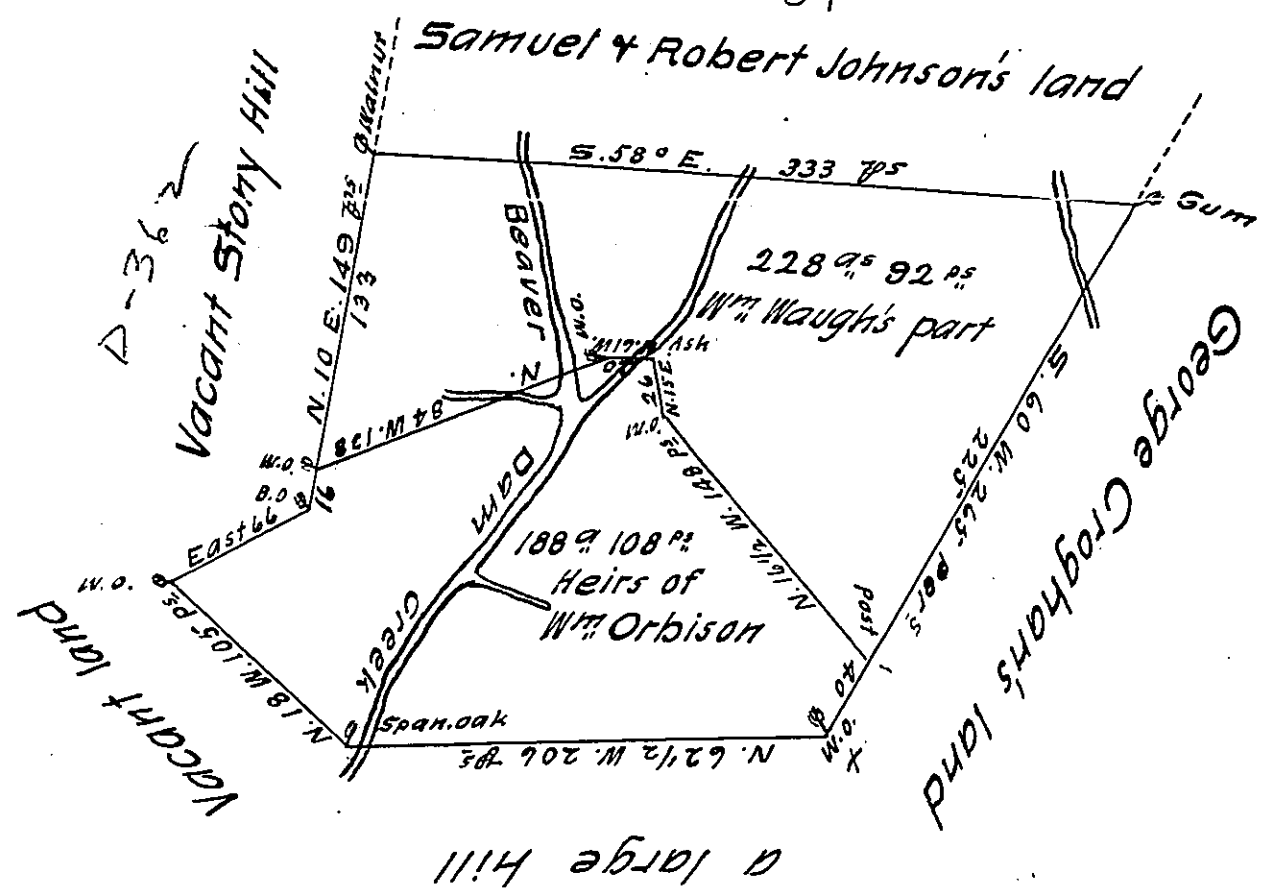


C96-199



A draught of a tract of land situate on Beaver Dam Creek in the County of Cumberland containing four hundred and seventeen acres and a quarter and the usual allowance of six acres $\frac{1}{4}$ for roads &c. Surveyed the fourteenth day of June 1765 to James Sterrit in pursuance of a warrant dated the third day of February 1755-

Wt No 44-

New Bedford Co

Note the above division $\frac{1}{4}$ Richard Tea Dep^y Survey^r taken from a Deed & Draft in the possession of Wm Waugh To John Lukens Esq^r Survey^r Gen^l

IN TESTIMONY that the above is a copy of the original remaining on file in the Department of Internal Affairs of Pennsylvania, made conformably to an Act of Assembly approved the 16th day of February, 1833, I have hereunto set my Hand and caused the Seal of said Department to be affixed at Harrisburg, this second day of August 1911

Henry Hoover
Secretary of Internal Affairs.